

Trude Dothan and Seymour Gitin
Principal Investigators and Project Directors

**Tel Miqne-Ekron Excavations
1985–1988, 1990, 1992–1995**

**Field IV Lower—The Elite Zone
Part 3B:**

**The Iron Age I and Iron Age IIC
Early and Late Philistine Cities**

Plans and Sections

Seymour Gitin, Trude Dothan, and Yosef Garfinkel

with contributions by
Laura Mazow and J. Rosenberg

edited by
Seymour Gitin

Tel Miqne-Ekron Final Field Report Series No. 9, Part 3B
W.F. Albright Institute of Archaeological Research
Institute of Archaeology, Hebrew University of Jerusalem
Jerusalem, 2014

We dedicate this volume to our good friend Joy Gottesman Ungerleider, without whose encouragement and support, this publication would not have been possible.

The Tel Miqne-Ekron Excavation and Publications Project
is affiliated with
The American Schools of Oriental Research
and
The Israel Exploration Society

Israel Antiquities Authority Excavation License Nos. G-6/1985, G-10/1986, G-9/1987, G-2/1988,
G-48/1990, G-73/1992, G-75/1993, G-42/1994, G-79/1995

Layout: Marzel A.S. — Jerusalem
Printed by the Old City Press, Jerusalem

ISBN 978-965-7114-02-5

2014

© Tel Miqne-Ekron Excavation and Publications Project
Project Office: W.F. Albright Institute of Archaeological Research
P.O. Box 19096, 91190 Jerusalem, Israel

CONTENTS

Grid Plan

Sections of Areas

1. North

NW.43, 27, 11, NE.11, 27

NW.42, 26, 10

3. North

NW.39, 23, 7, NE.7, 23

East

NW.43, 42, 41, 40, 39

5. East

NE.10, 9, 8, 7

NE.27, 26, 25, 24, 23

7. South

NE.25, 9, NW.9, 25, 41

NE.24, 8, NW.8, 24, 40

9. West

NW.23, 24, 25, 26, 27

NW.7, 8, 9, 10, 11

2. North

NW.41, 25, 9, NE.9, 25

NW.40, 24, 8, NE.8, 24

4. East

NW.27, 26, 25, 24, 23

NW.10, 9, 8, 7

6. South

NW.11, 27, 43

NE.26, 10, NW.10, 26, 42

8. South

NE.23, 7

NW.41, 42, 43

10. West

NE.7, 8, 9, 10, 11

NE.23, 24, 25, 26

Sections of Probes

11. IVSE.16 North, East, South, West

12. IVSW.8 North, East, South, West

13. IVNE.1 North, East Subsidiary, South, West

Plans

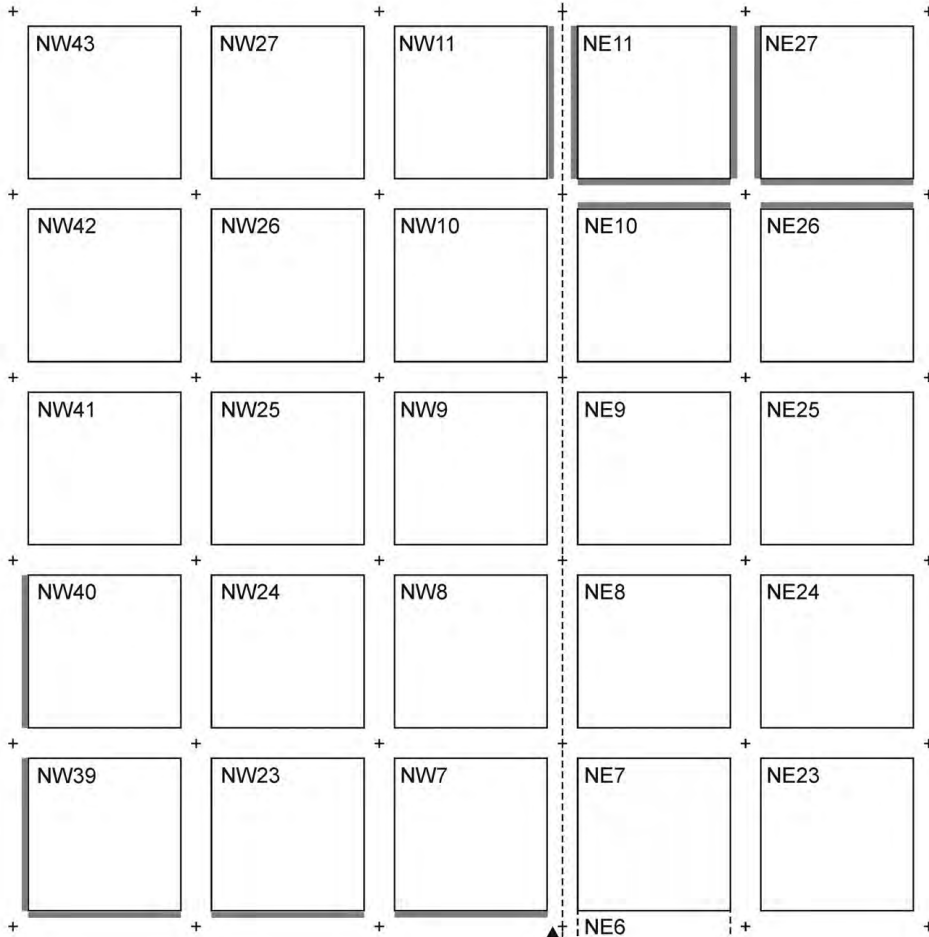
Strata IA, IB/C, IC, Pre-IC, IVA, IVB, VA, VB, VC, VIA, VIB, VIIA, VIIB, XI

Probes: IVSE.16 Plans 1, 2, 3; IVSE.8 Plans 4, 5, 6; IVNE.1 Plans 7, 8

Tel Miqne-Ekron Field IV Lower Grid Plan



0 5m



Sections not drawn

36m

NW

NE

SW

SE

42m

SW8

SE16

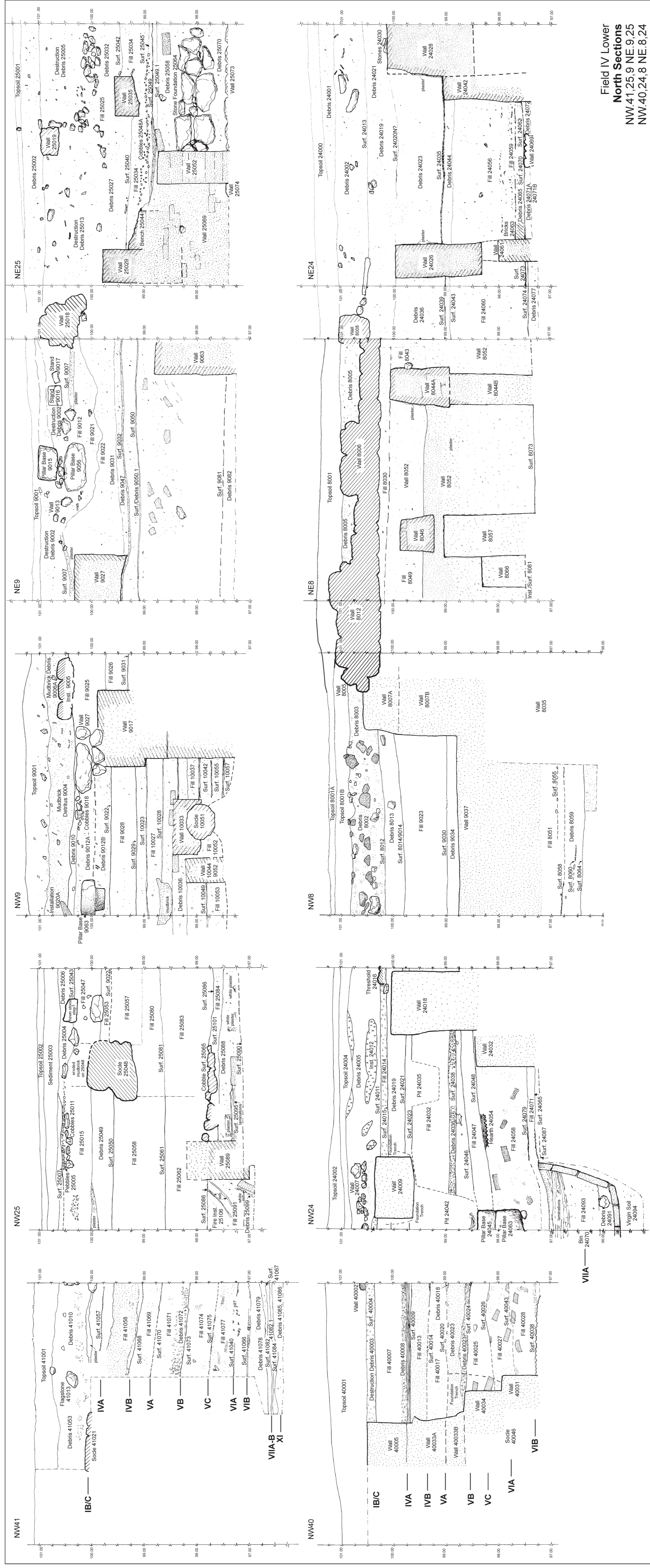
42m

Probes



Field IV Lower
 North Sections
 NW.43,27,11NE.11,27
 NW.42,26,10

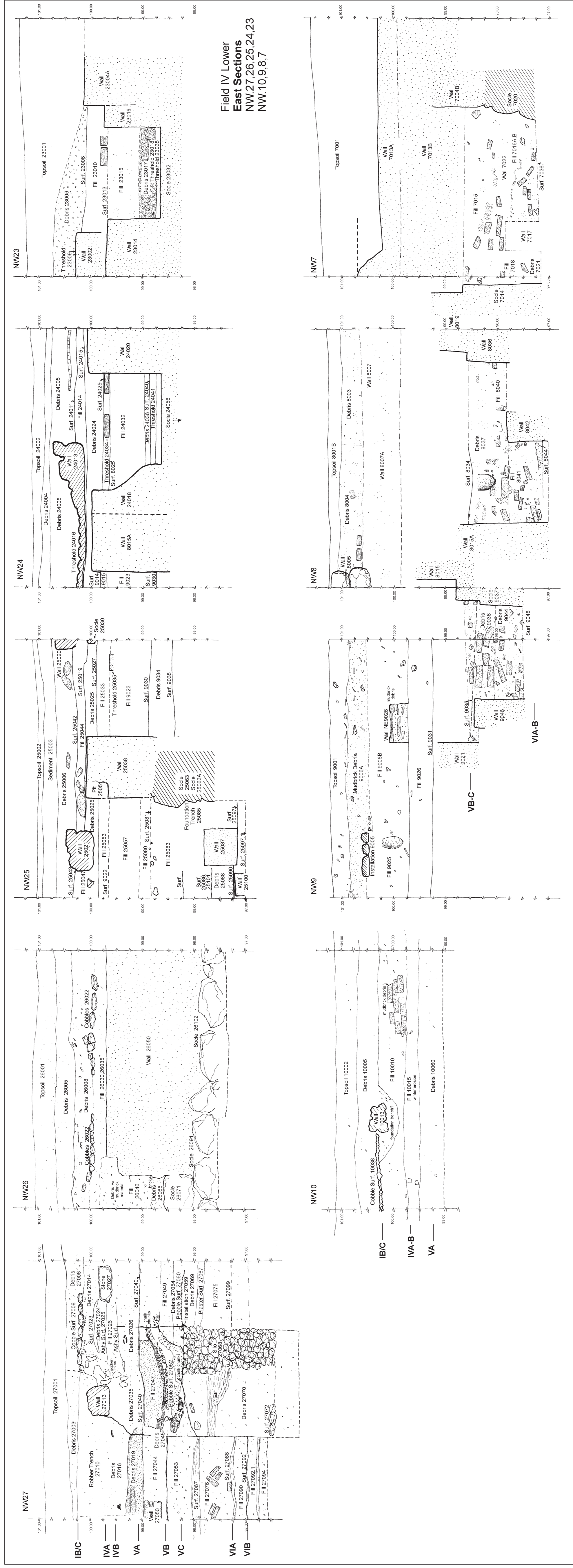
Sections
1. North
NW.43, 27, 11 NE.11, 27
NW.42, 26, 10



**Field IV Lower
North Sections**
NW.41.25.9 NE.9.25
NW.40.24.8 NE.8.24

Sections
2. North
NW.41, 25, 9 NE.9, 25
NW.40, 24, 8 NE.8, 24

Sections
3. North NW.39, 23, 7 NE.7, 23
East NW.43, 42, 41, 40, 39



Sections

4. East
NW.27, 26, 25, 24, 23
NW.10, 9, 8, 7

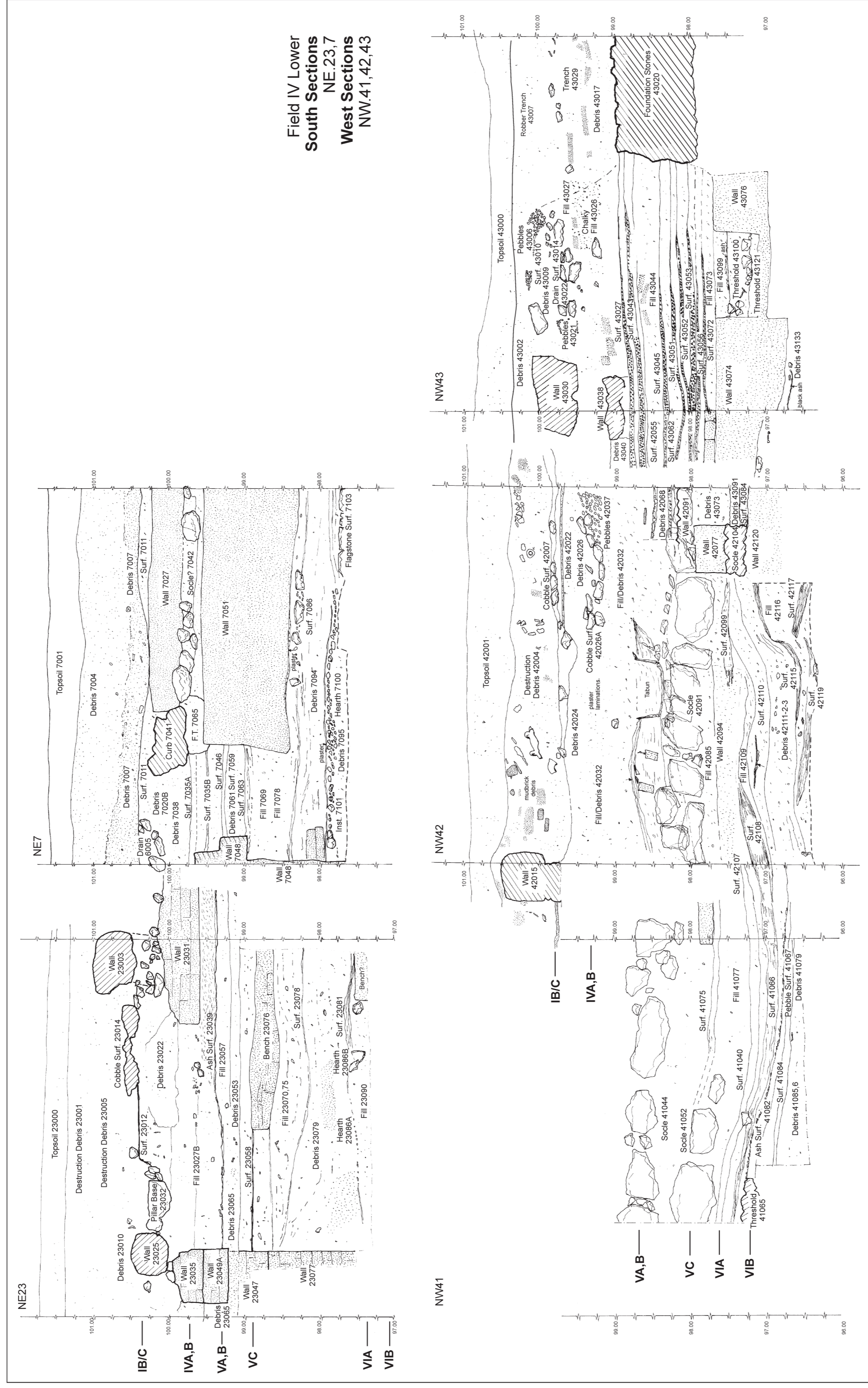
Sections

- 5. East
NE.10, 9, 8, 7
NE.27, 26, 25, 24, 23

Sections
6. South
NW.11, 27, 43
NE.26, 10 NW.10, 26, 42

Sections
7. South
NE.25, 9 NW.9, 25, 41
NE.24, 8 NW.8, 24, 40

Field IV Lower
South Sections
NE.23.7
West Sections
NW.41,42,43



Sections
8. South
NE.23, 7
West
NW.41, 42, 43

Sections
9. West
NW.23, 24, 25, 26, 27
NW.7, 8, 9, 10, 11

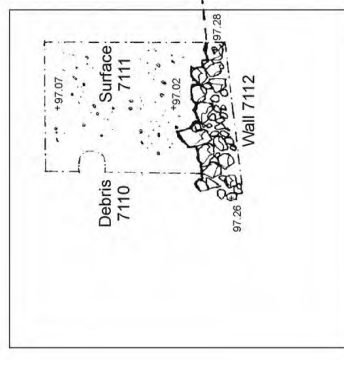
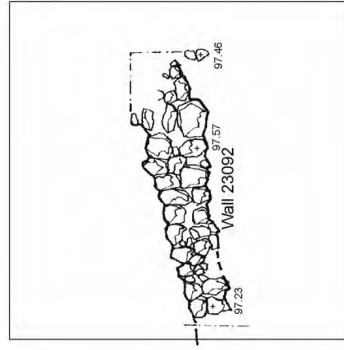
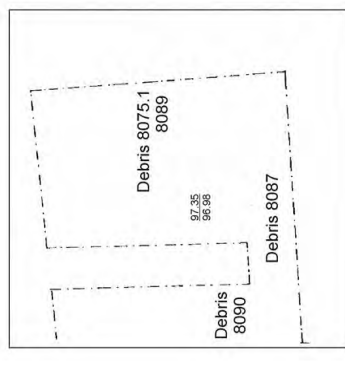
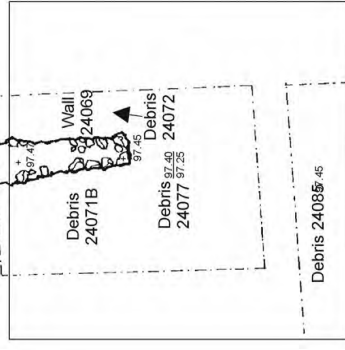
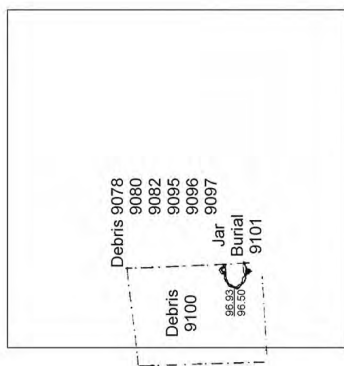
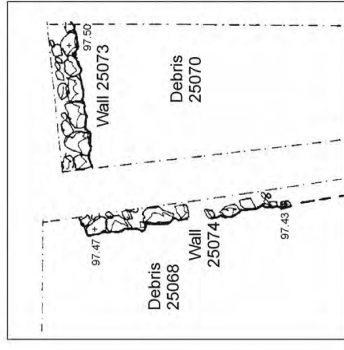
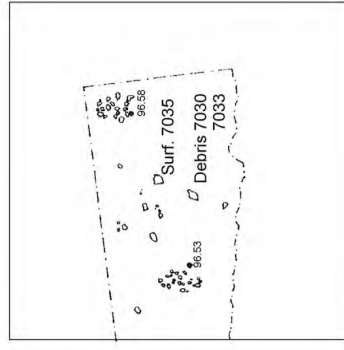
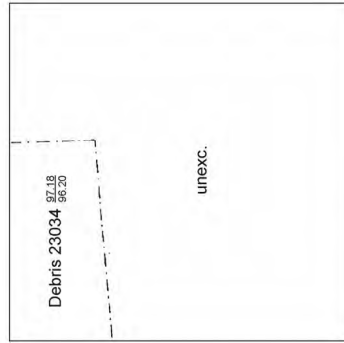
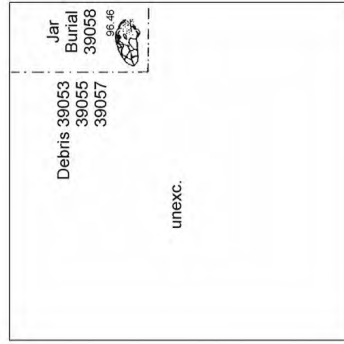
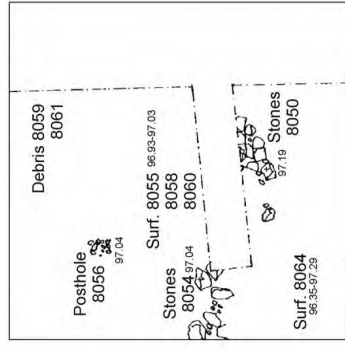
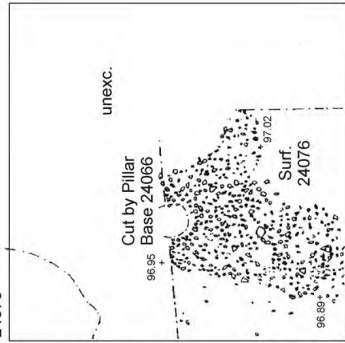
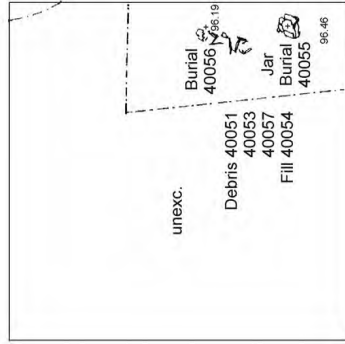
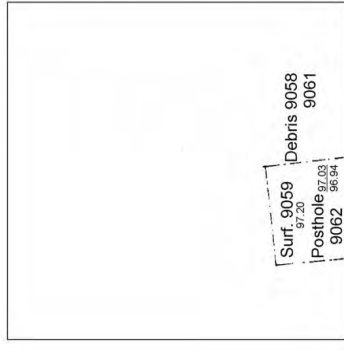
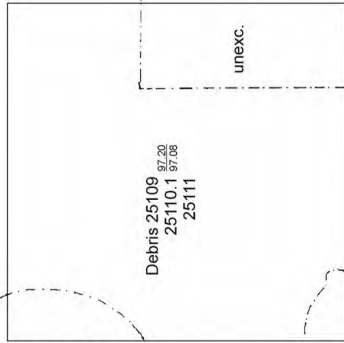
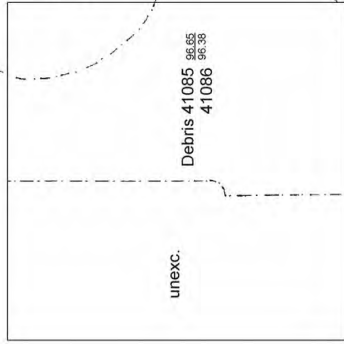
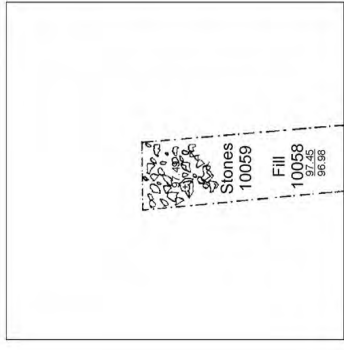
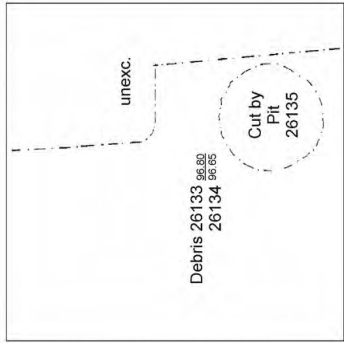
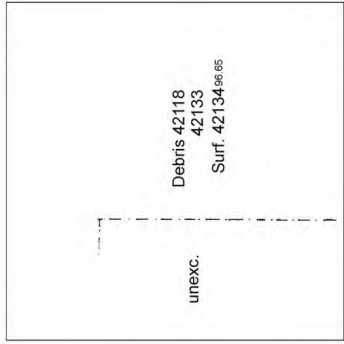
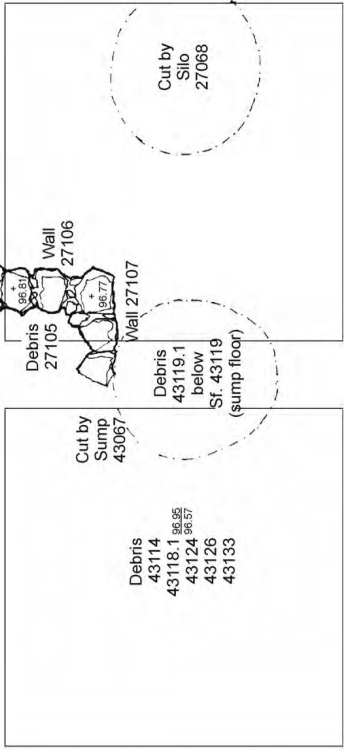
Sections
10. West NE:7, 8, 9, 10, 11
NE:23, 24, 25, 26

Sections of Probes

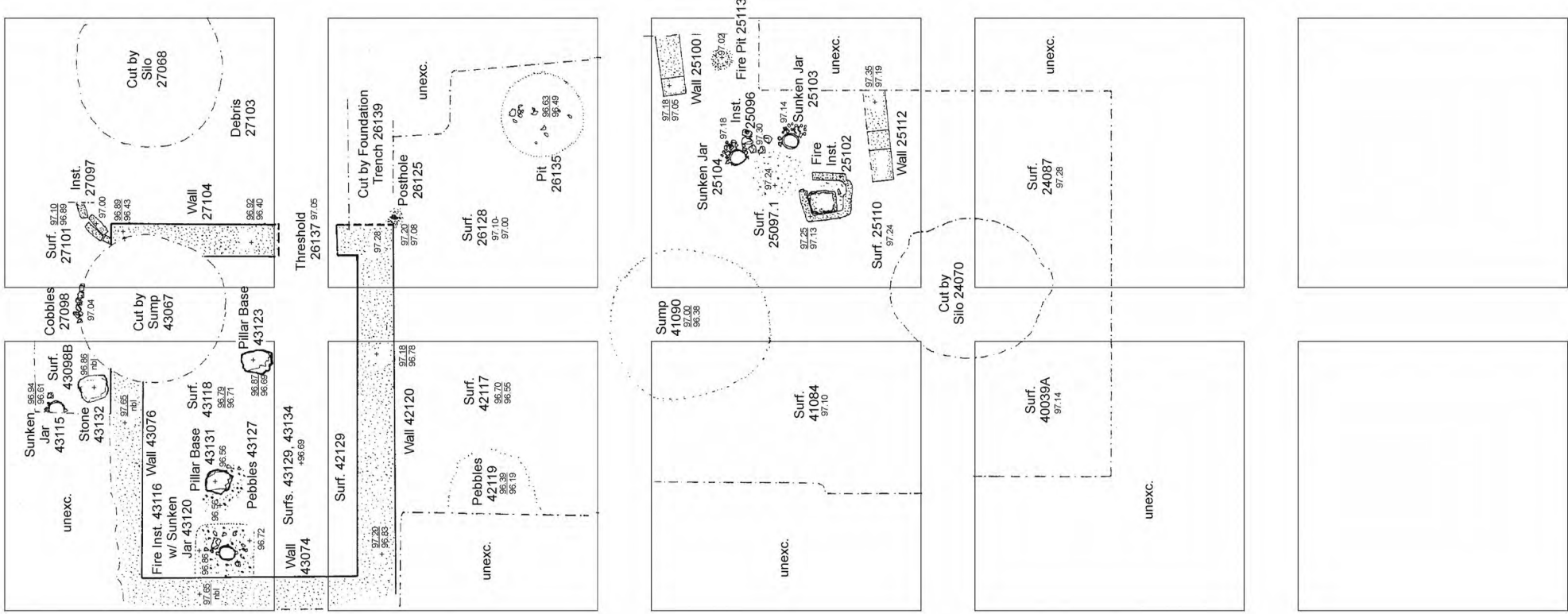
11. IVSE.16
12. IVSW.8
13. IVNE.1
N, E, S, W.

NW NE

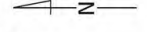
Tel Migne-Ekron Field IV Lower Stratum XI



Stratum XI

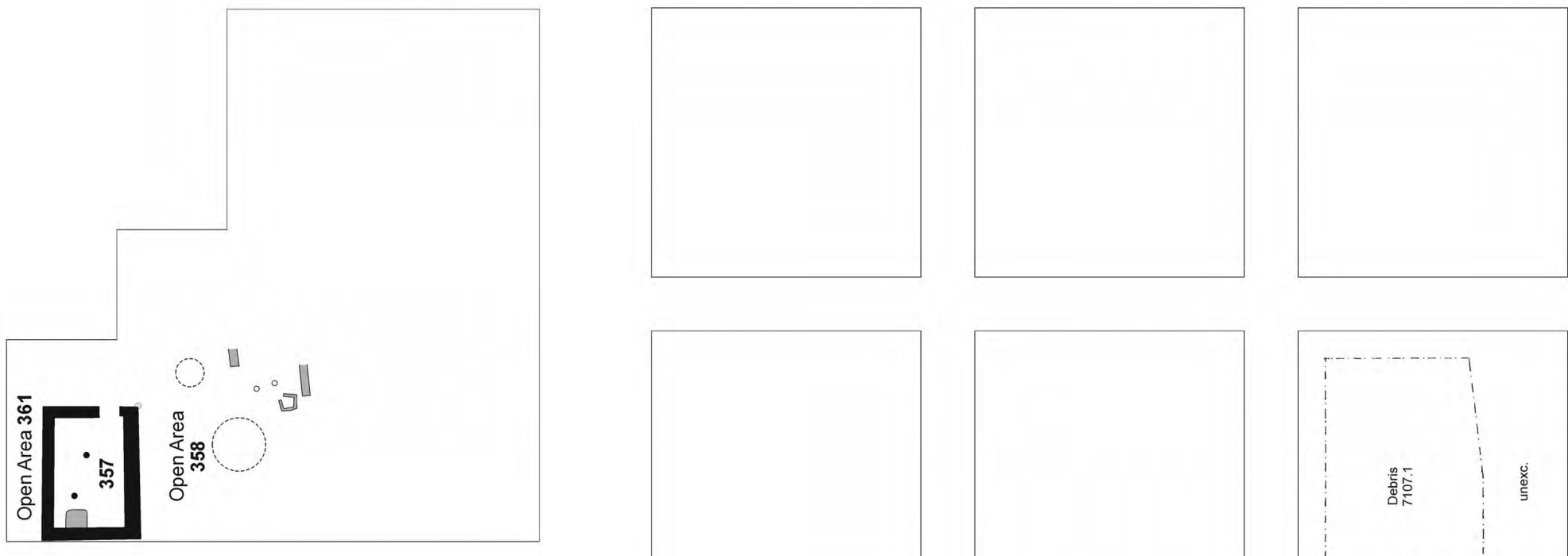


Tel Miqne-Ekron
Field IV Lower
Stratum VIIIB



0 3m

NW NE



Open Area 361

357

Open Area 358

Debris 7107.1

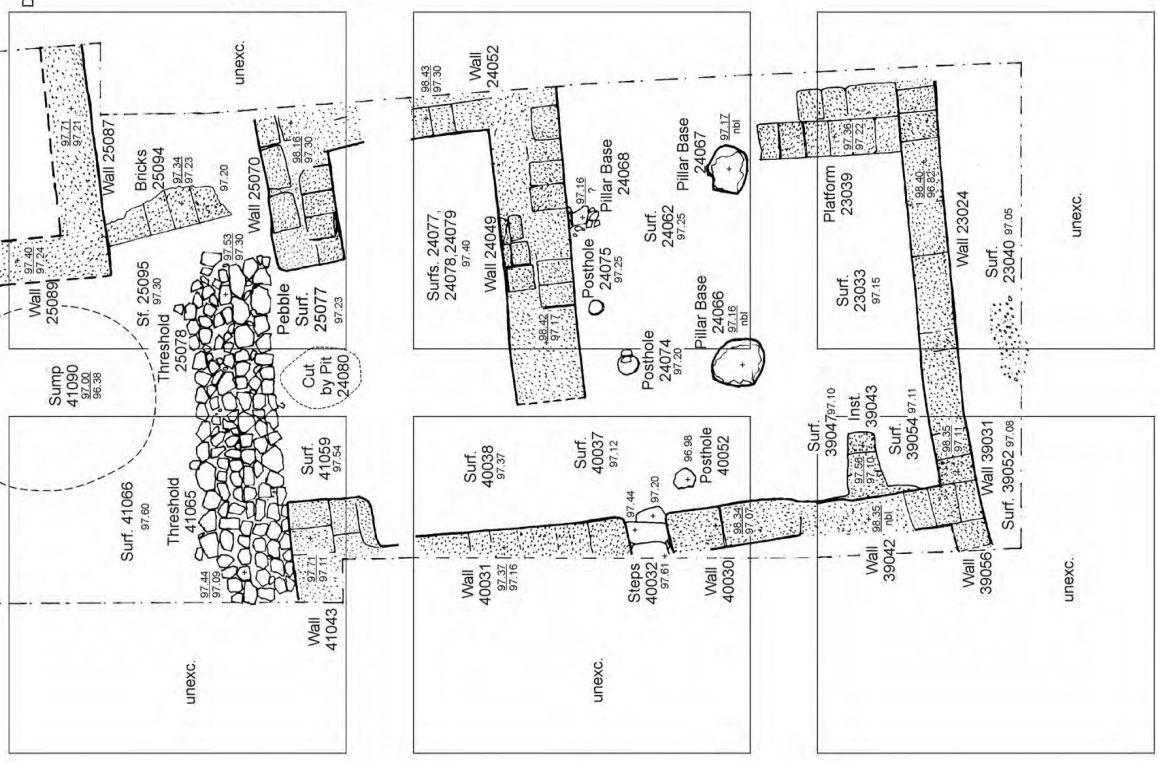
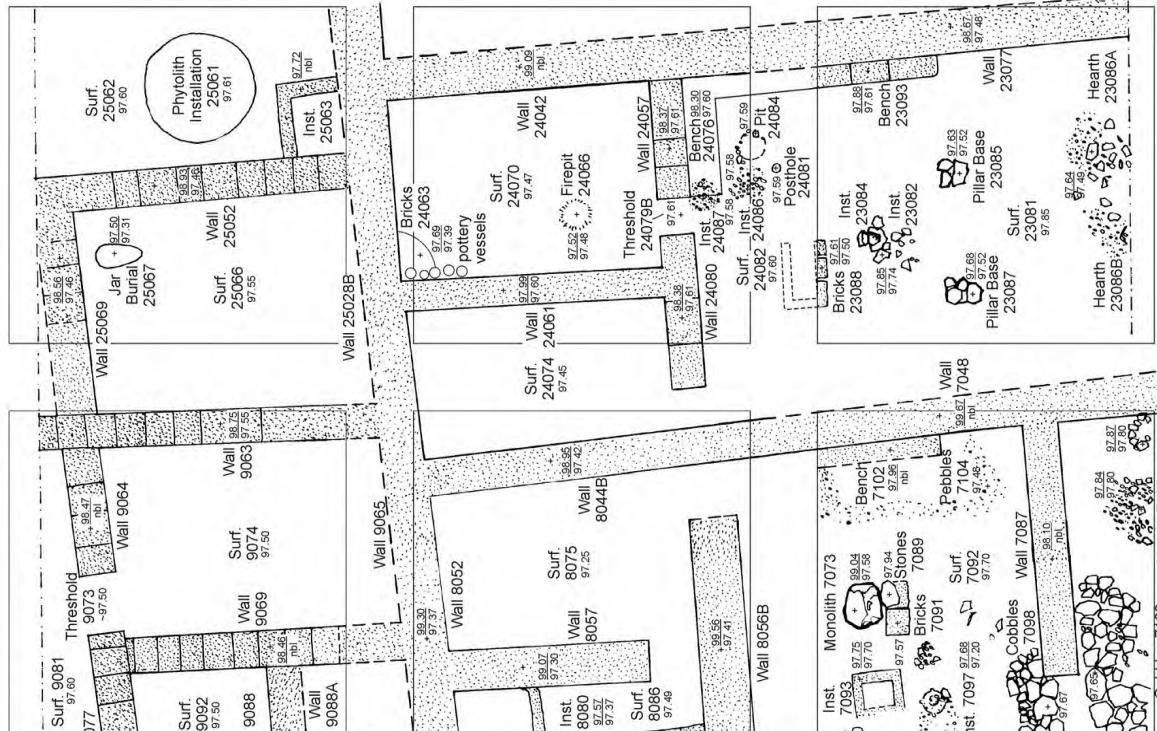
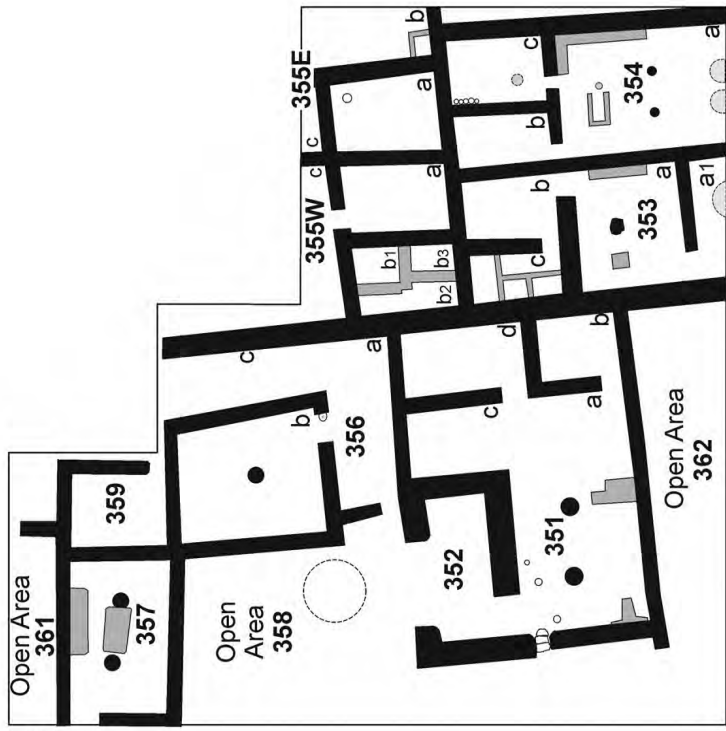
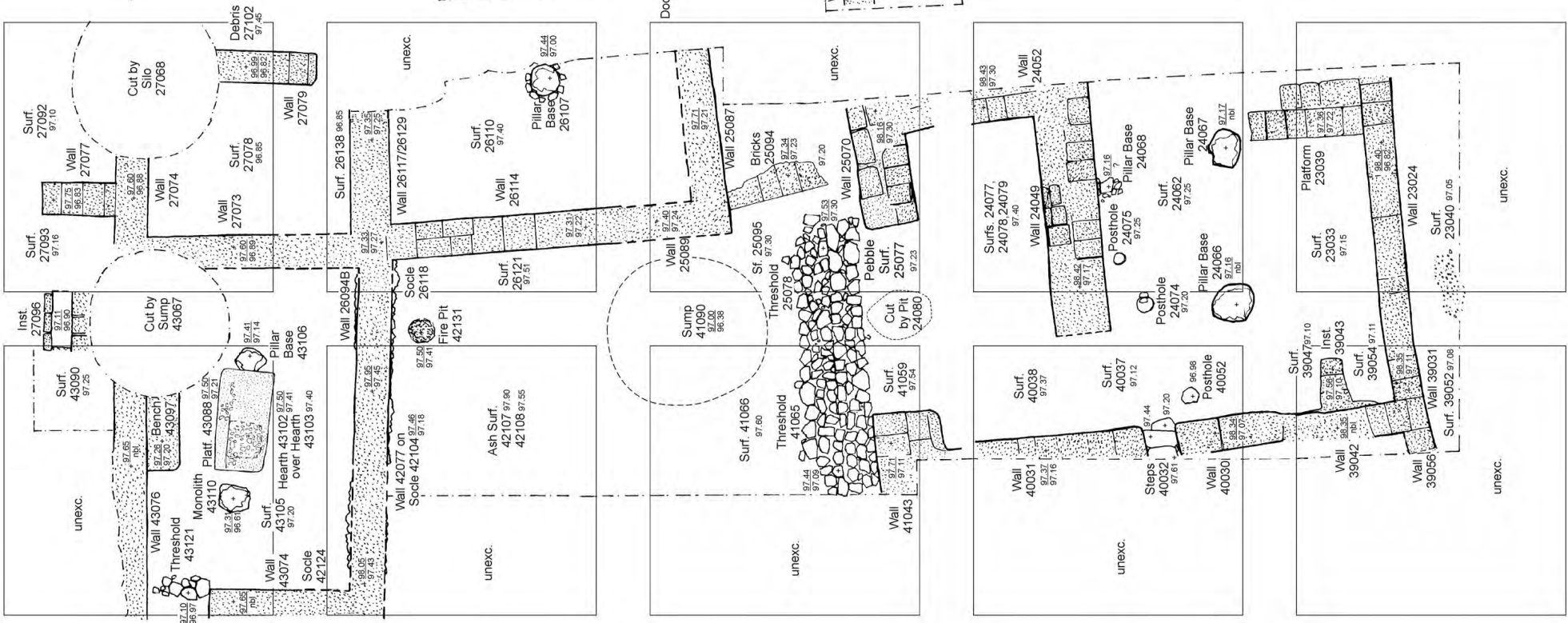
unexc.

Stratum VIIB

Stratum VIIIA

NW NE

Tel Migne-Ekron Field IV Lower Stratum VIB



Hearth 7100 Inst. 7101

unexc.

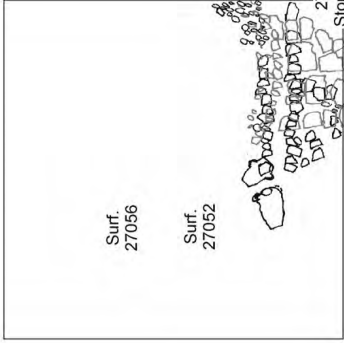
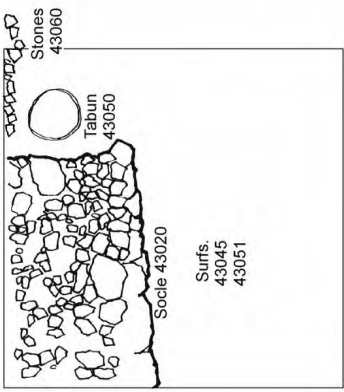
unexc.

unexc.

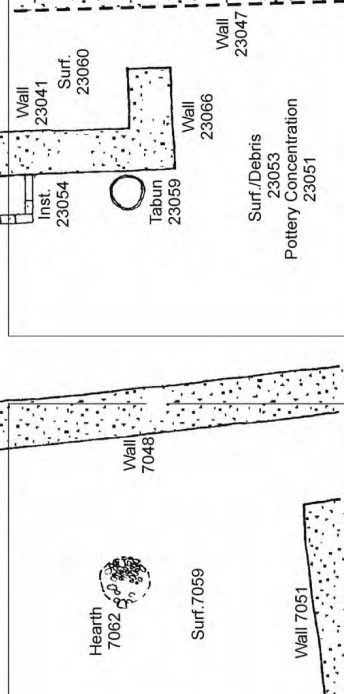
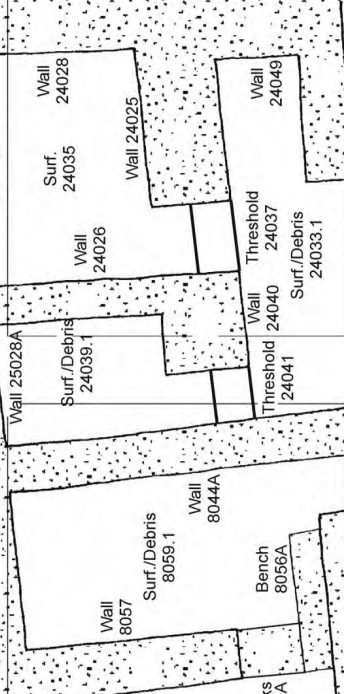
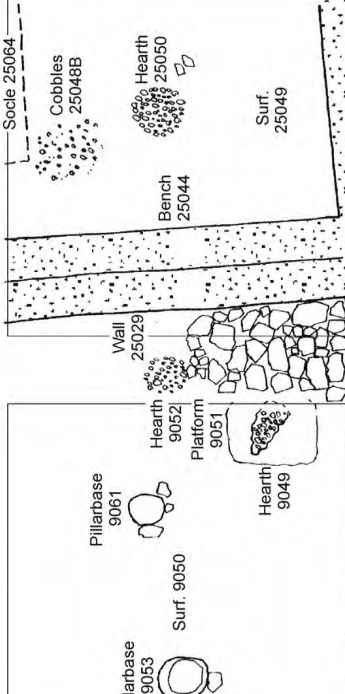
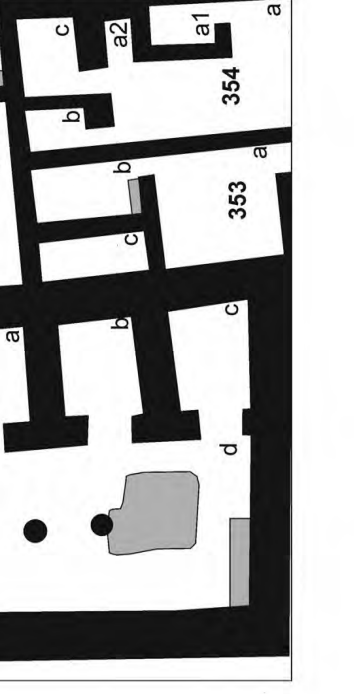
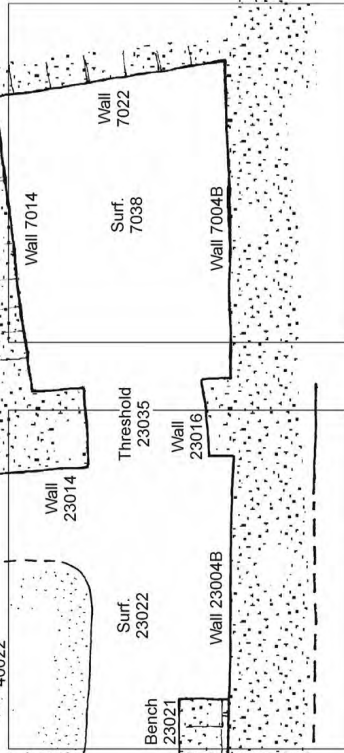
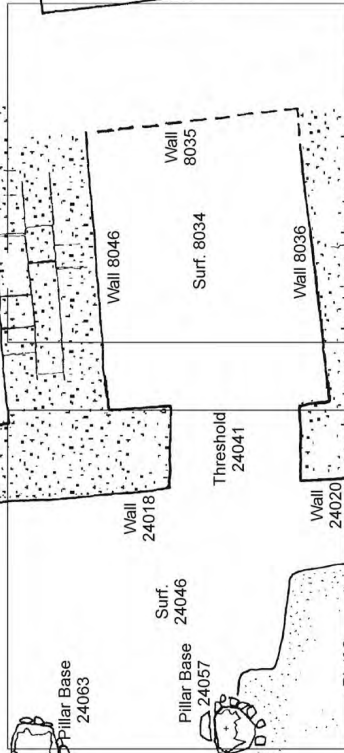
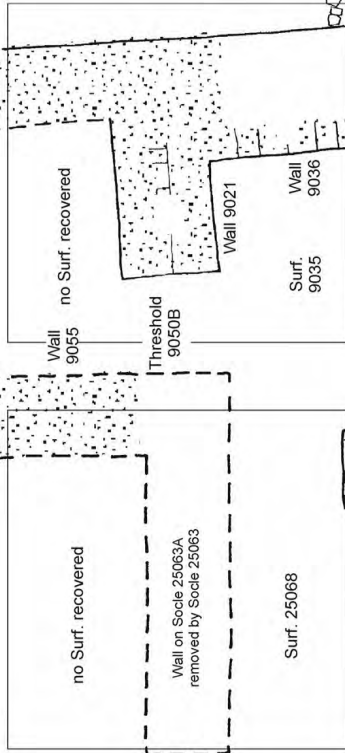
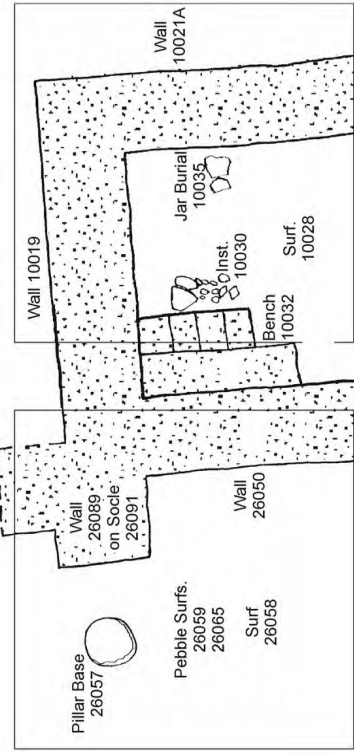
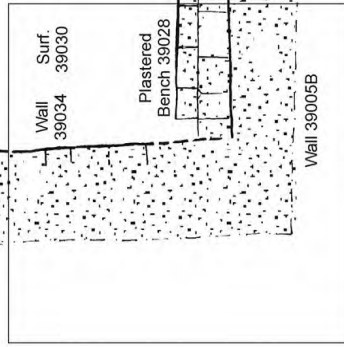
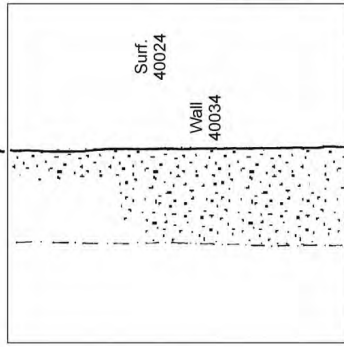
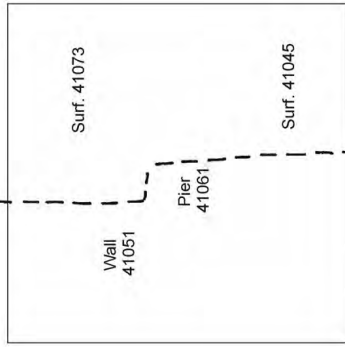
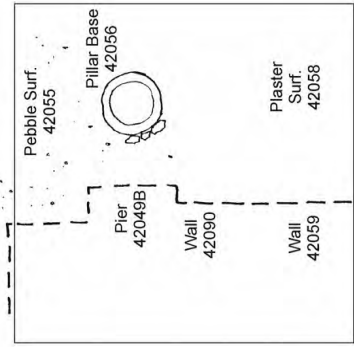
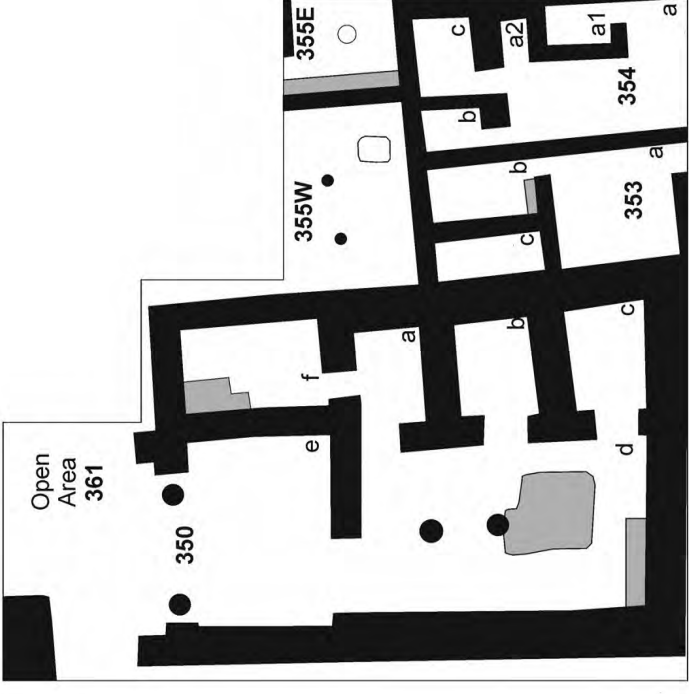
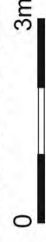
Stratum VIB

Stratum VIA

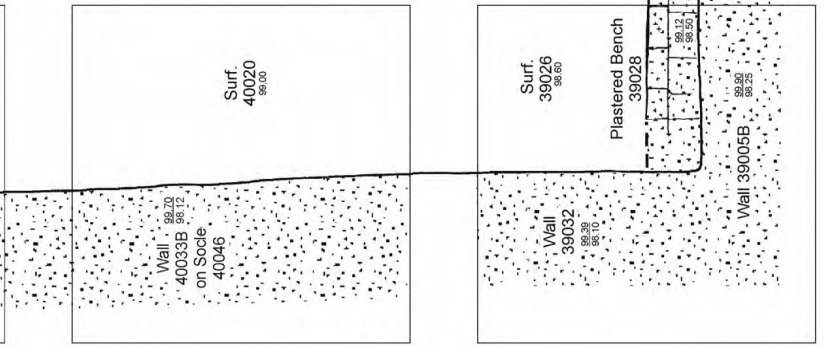
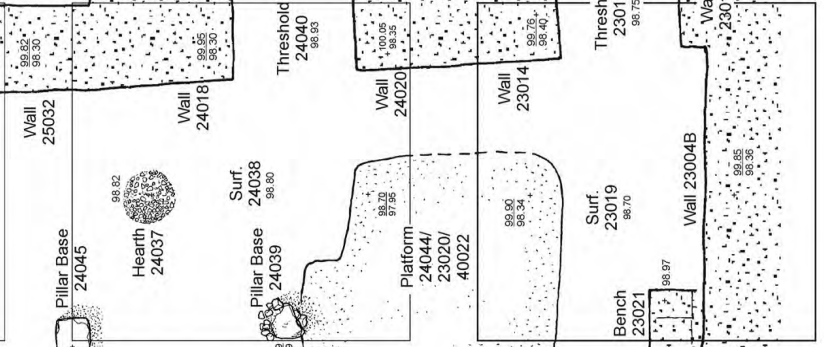
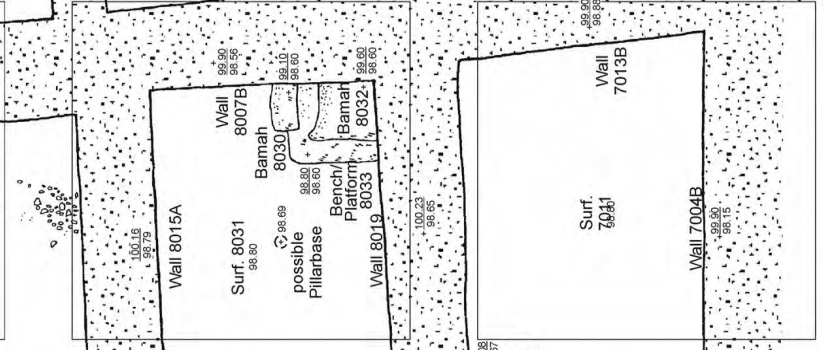
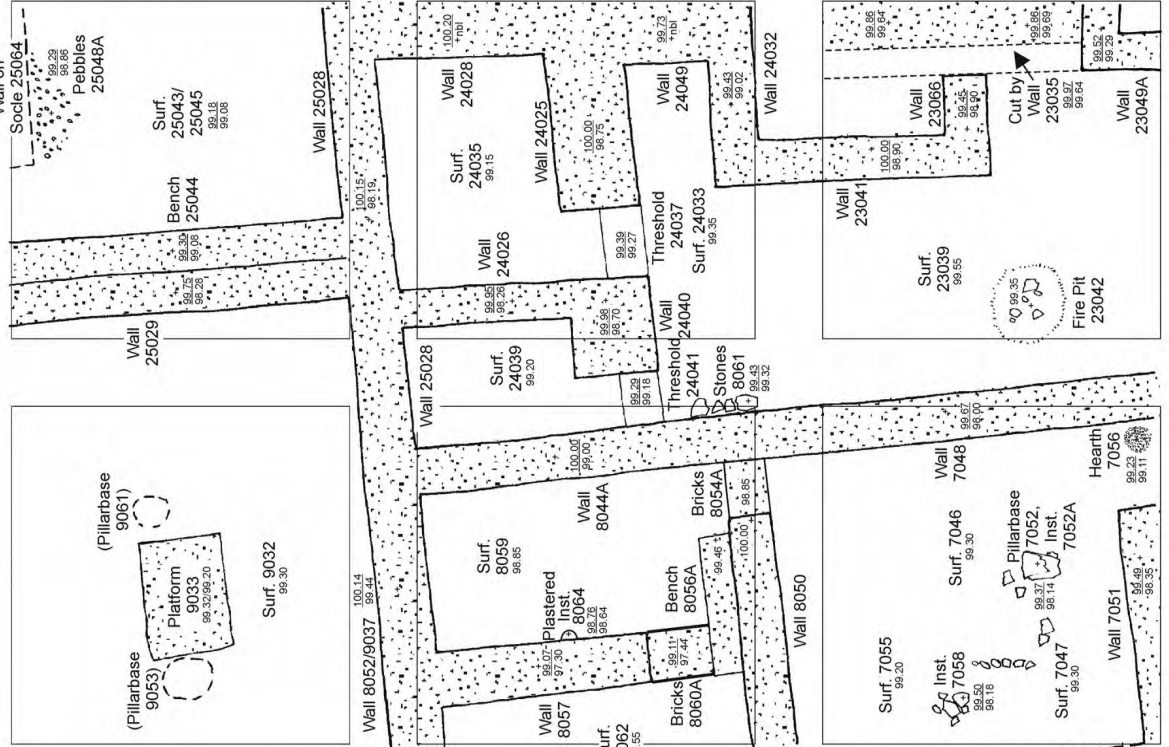
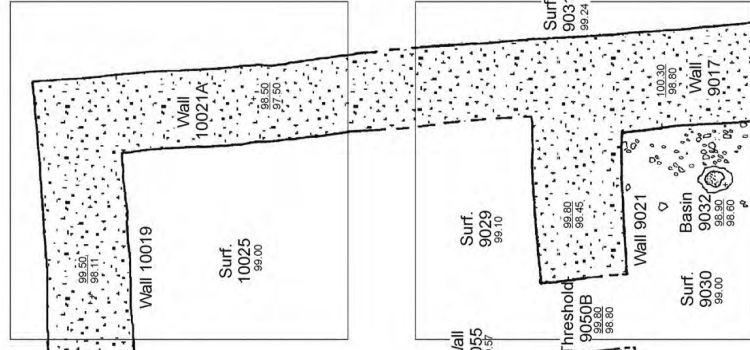
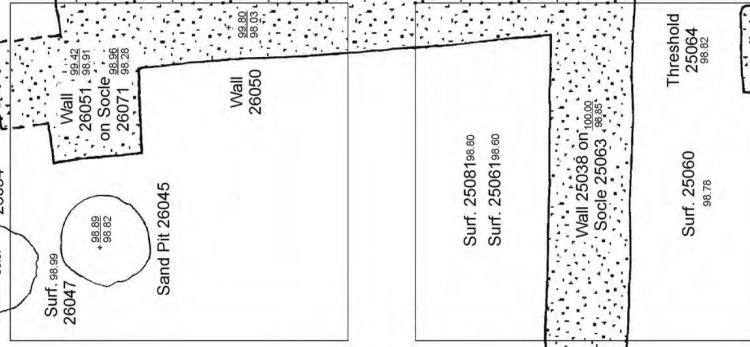
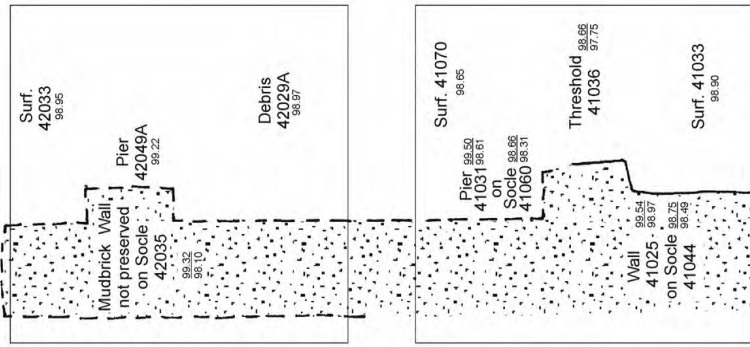
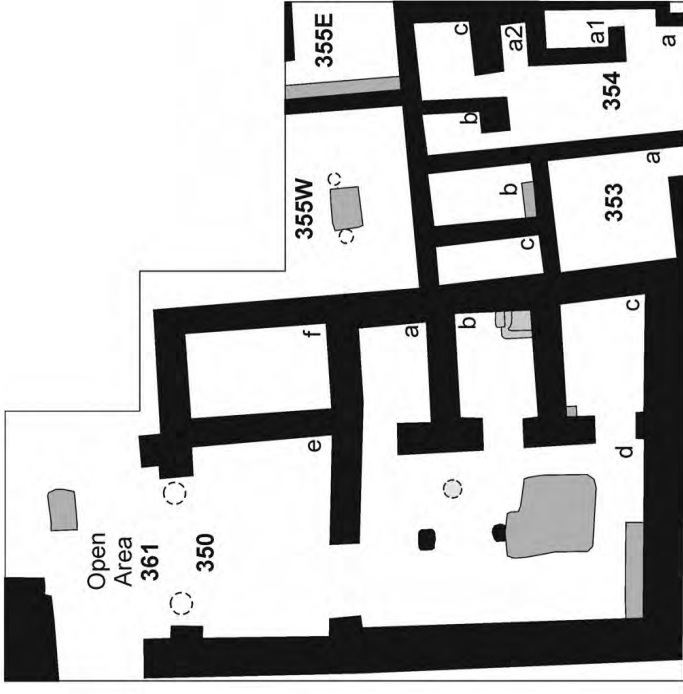
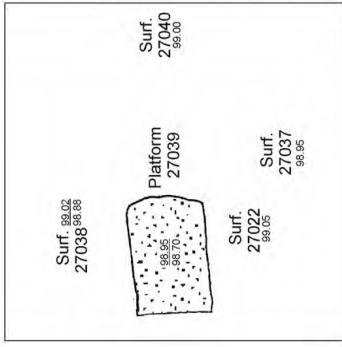
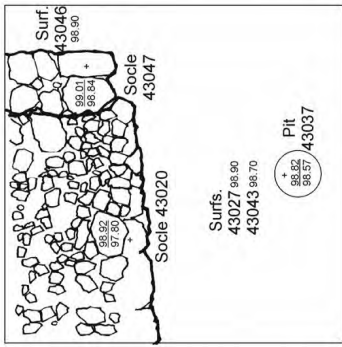
Stratum VC



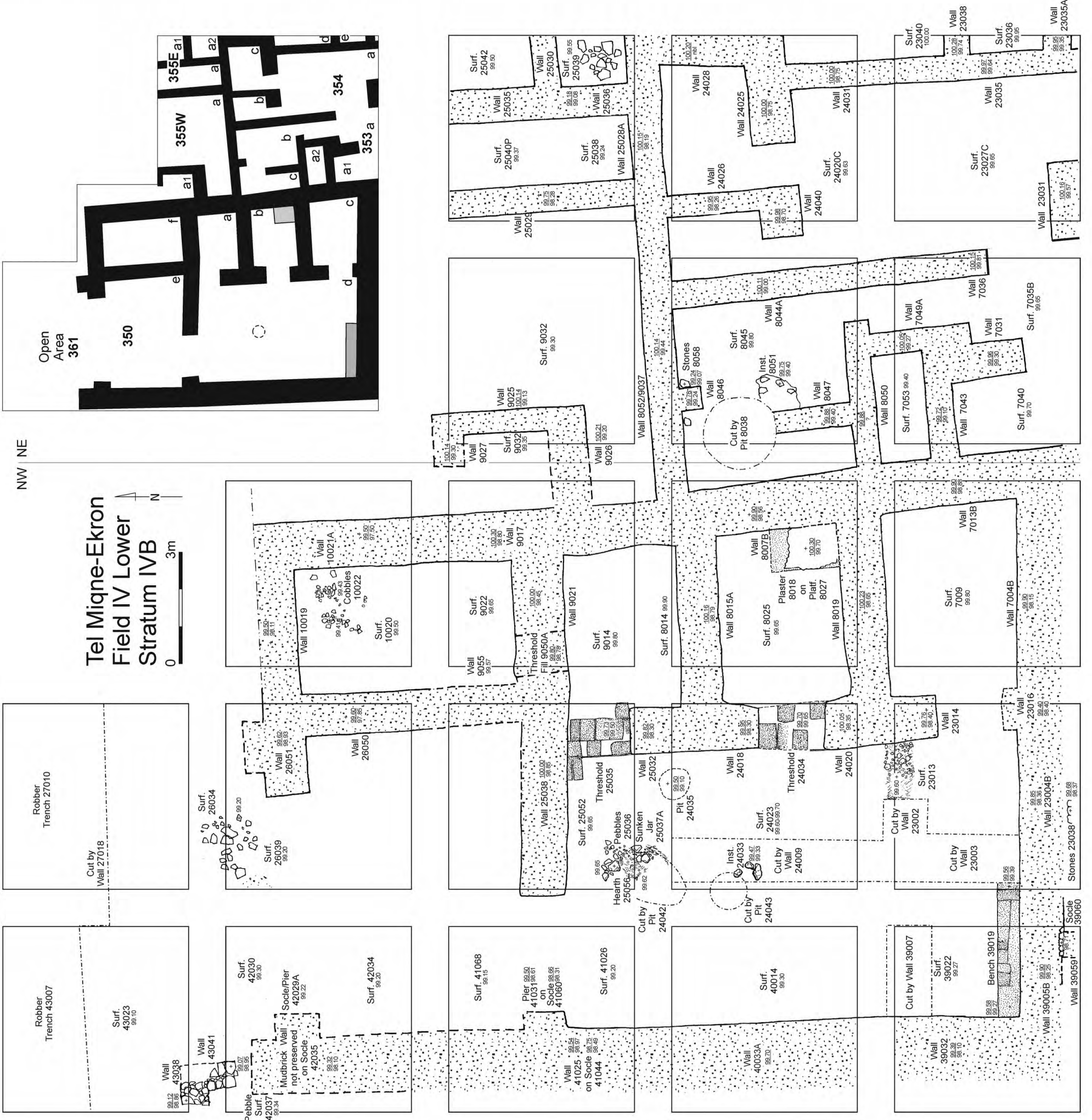
Tel Migne-Ekron Field IV Lower Stratum VB



Stratum VB

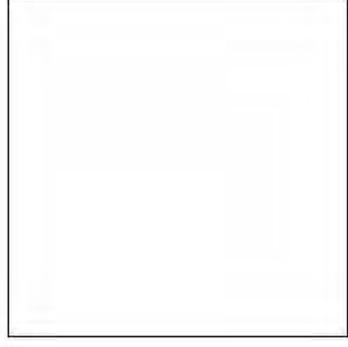
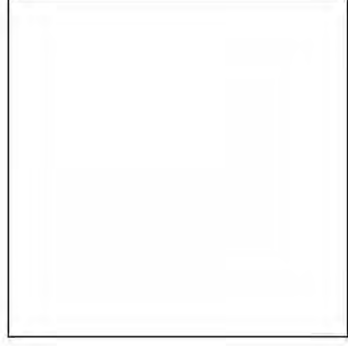
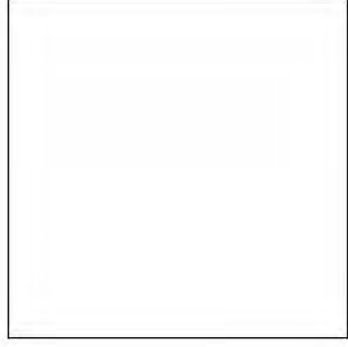
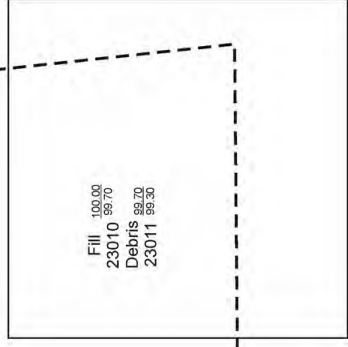
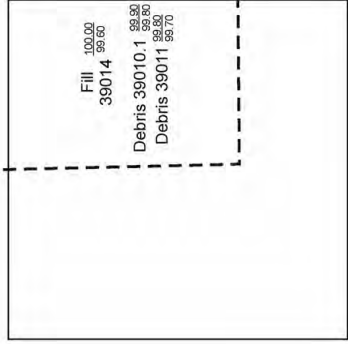
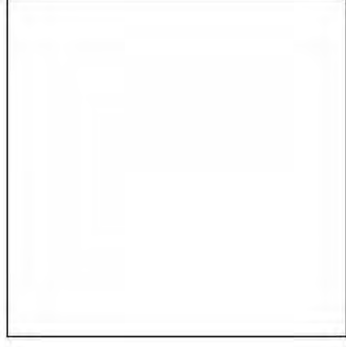
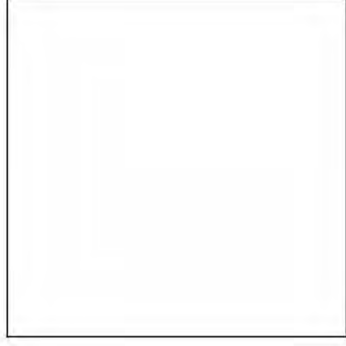
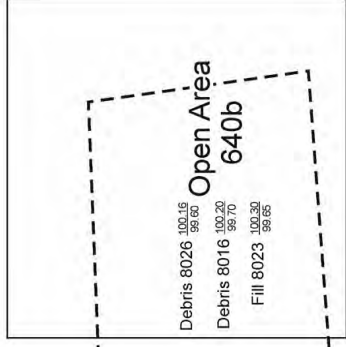
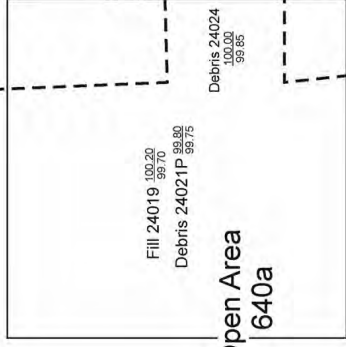
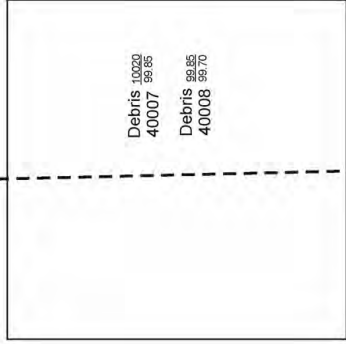
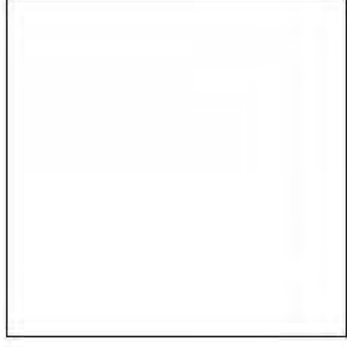
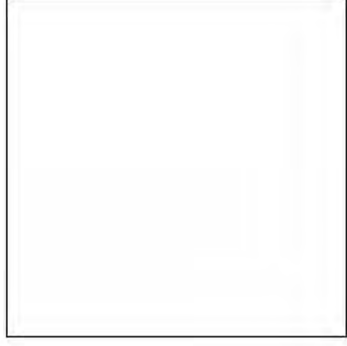
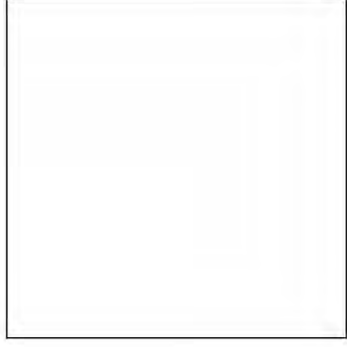
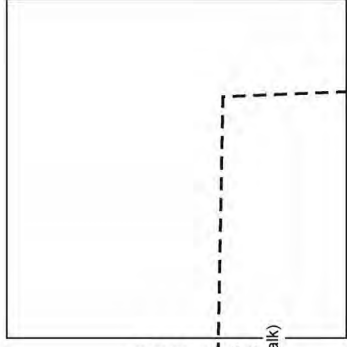
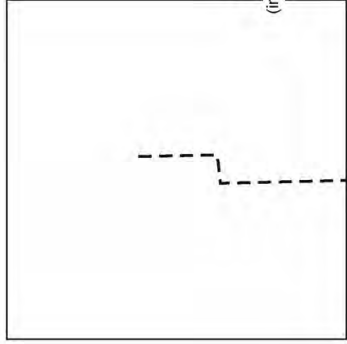
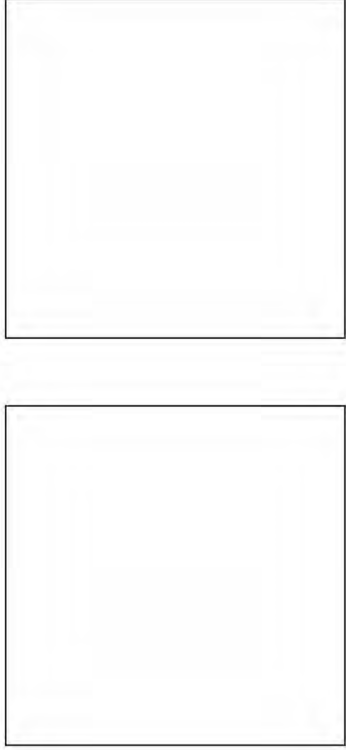
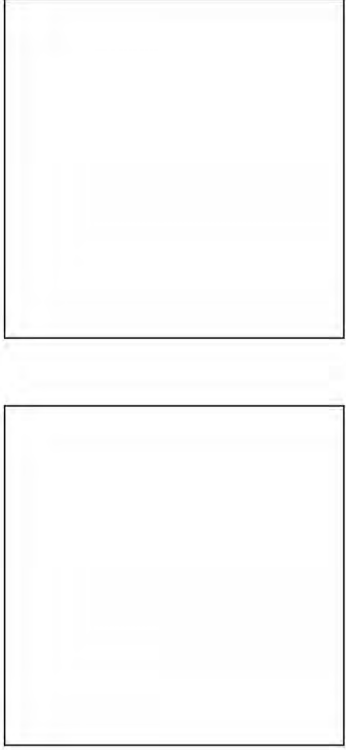


Stratum VA



Stratum IVB

Stratum IVA



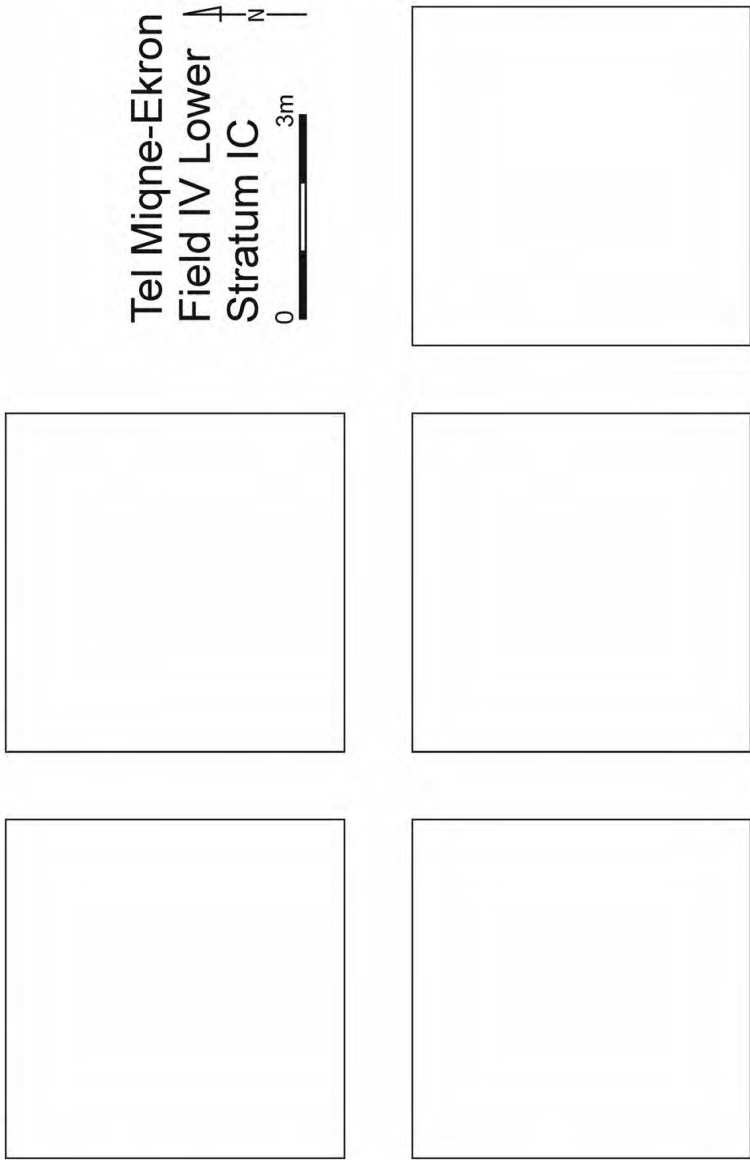
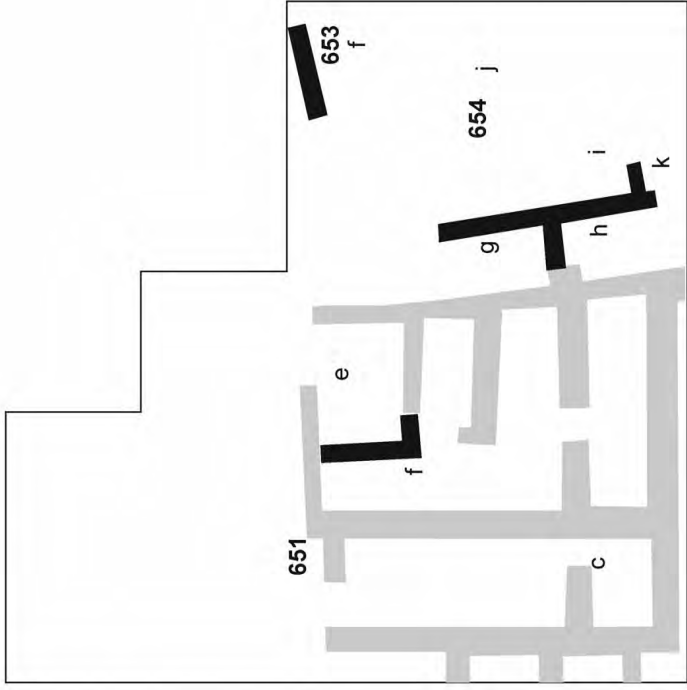
Tel Miqne-Ekron
Field IV Lower
Stratum Pre-IC



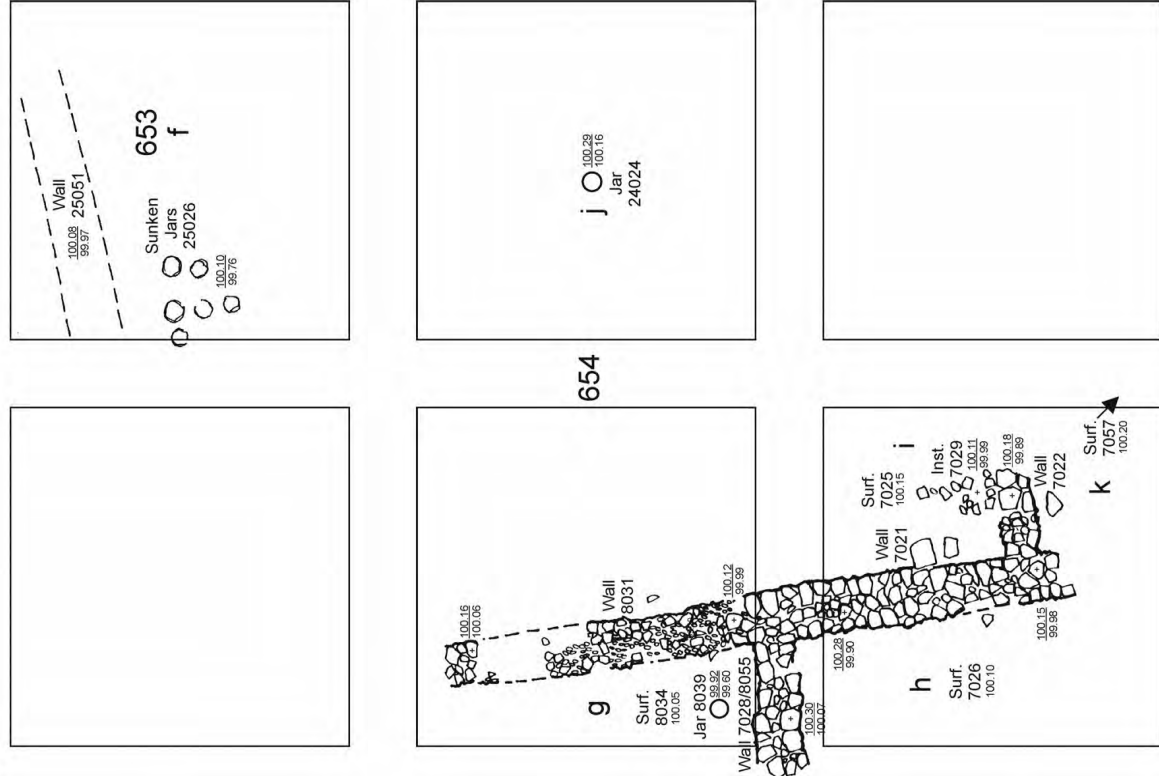
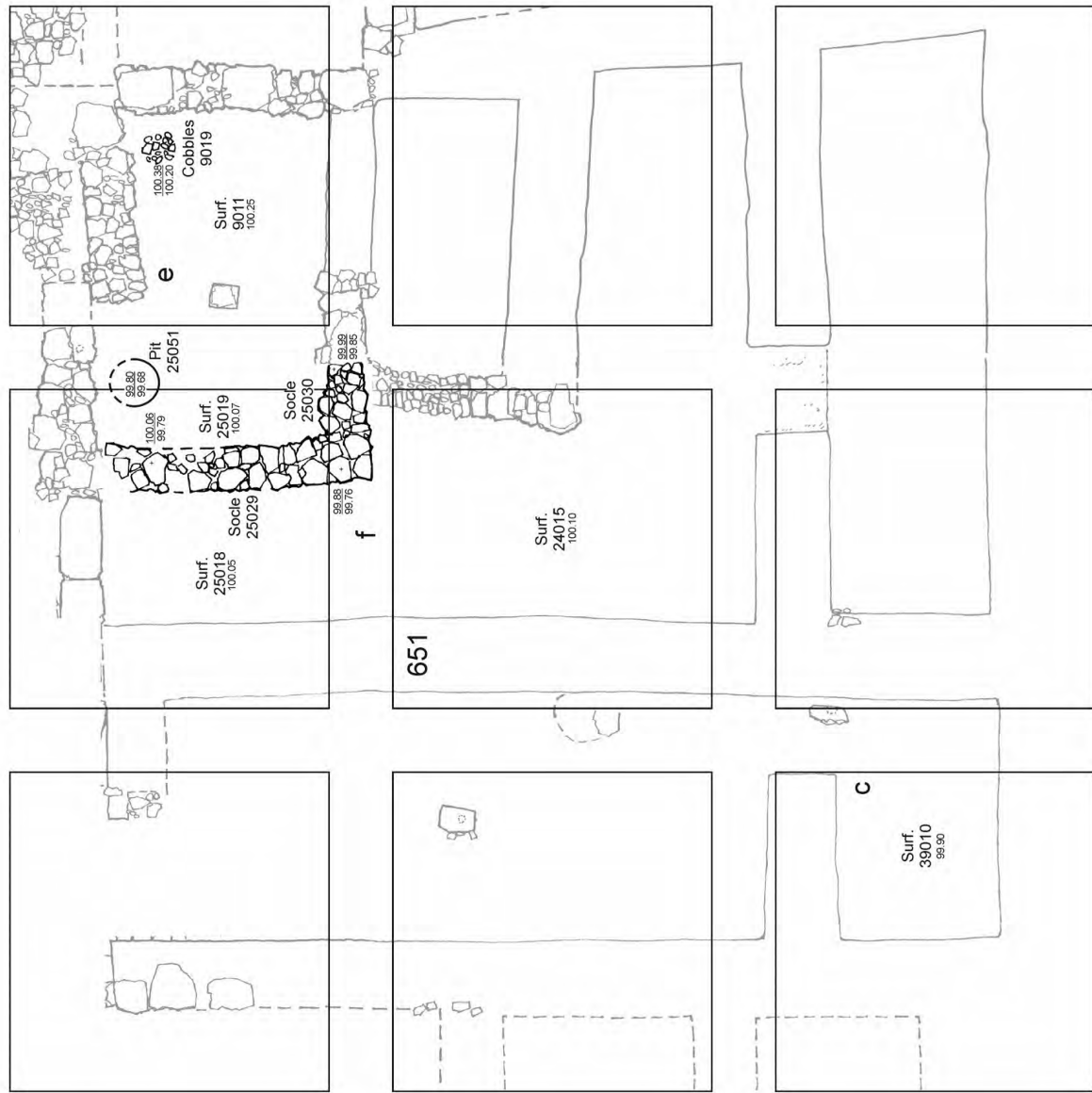
NW NE

Stratum Pre-IC

Tel Migne-Ekron
Field IV Lower
Stratum IC

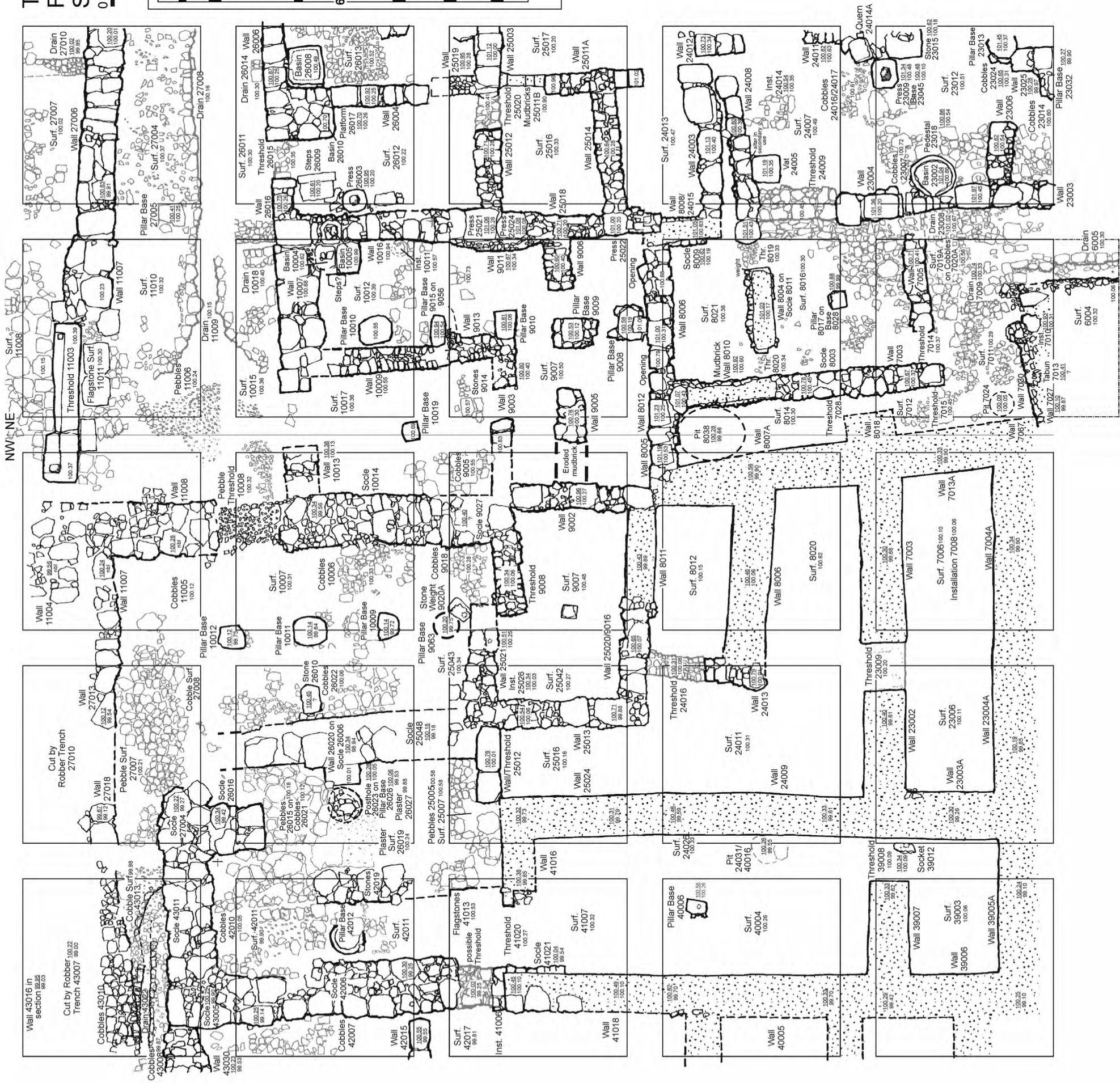
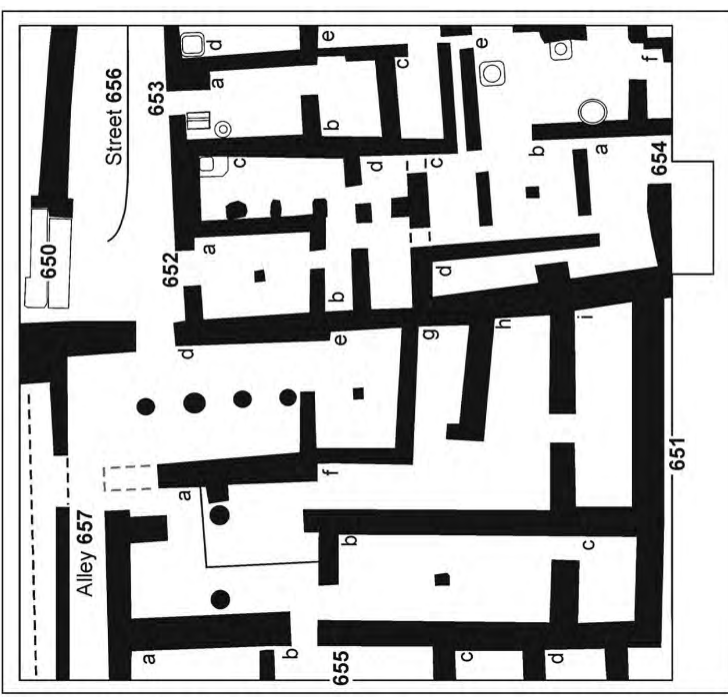


NW NE



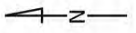
Stratum IC

Tel Miqne-Ekron
Field IV Lower
Stratum IB (IB/C)

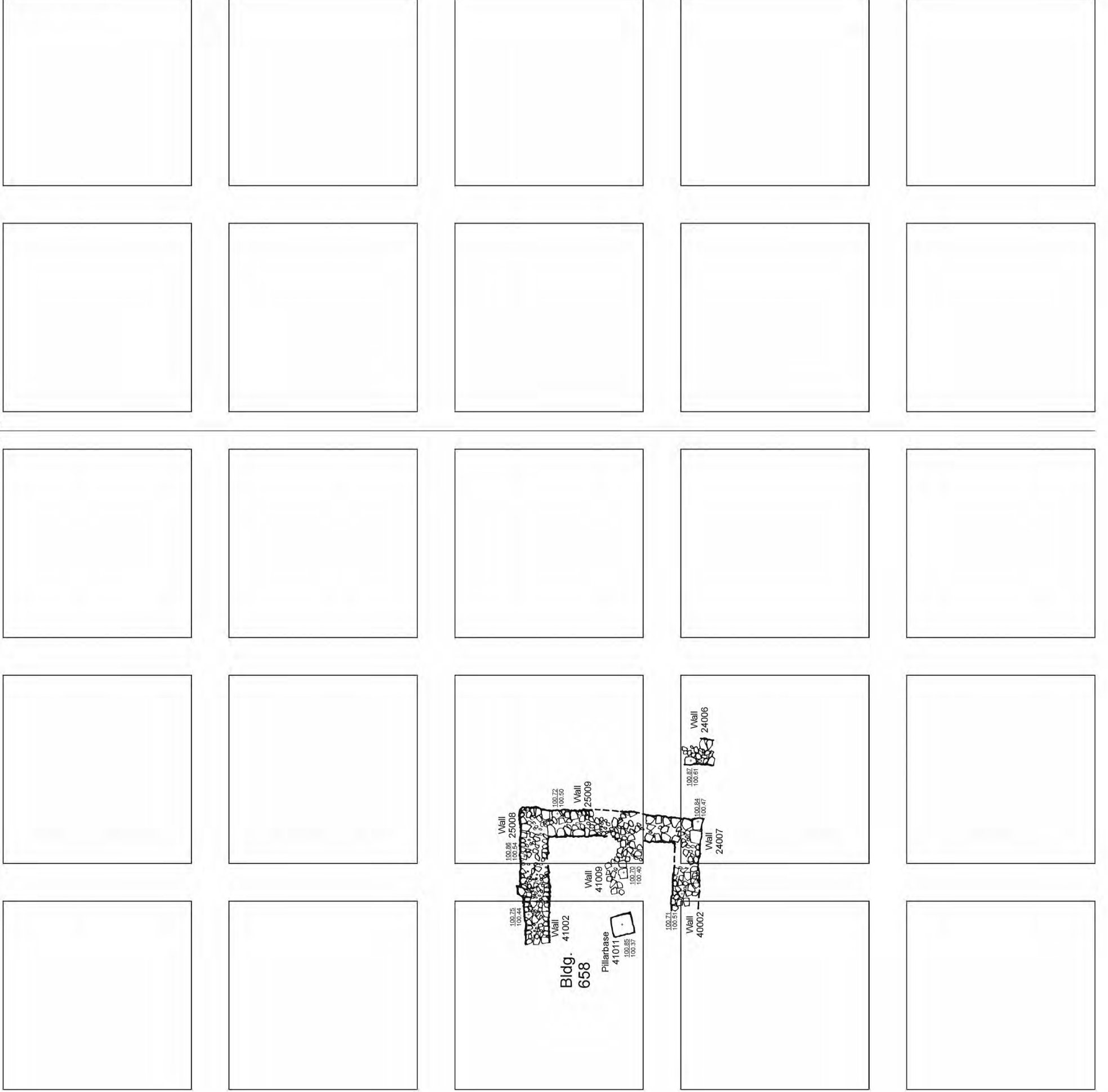


Stratum IB (IB/C)

Tel Migne-Ekron
Field IV Lower
Stratum IA



NW NE



Stratum IA